



Dear Customers,

product prices provided in this brochure are outdated. Due to supply shortages and material price increases, some product prices have changed. We will update this brochure soon. Please contact us for a quotation with updated prices. Thank you for your understanding.



# Base Mounts & Accessories

## 795-0016

## THREAD ADAPTERS



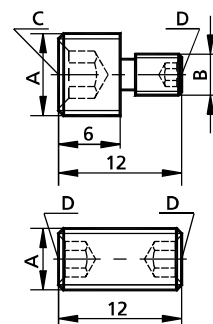
Thread Adapters 795-0016 are used to connect components when precise orientation in plane is not required. Some adapters have different threads on ends. So, you can connect components with M4 and M6 threaded holes. Material: stainless steel.

Metric/imperial thread adapters are available on request.

Model	A	B	C	D	Price, EUR
795-0016-43	M4	M3	2	1.5	2.25
795-0016-63	M6	M3	3	1.5	2.25
795-0016-64	M6	M4	3	2	1.5
795-0016-84	M8	M4	4	2	2.25
795-0016-81	8-32	1/4-20	2	3	2.25

Model	A	B	C	D	Price, EUR
795-0016-44	M4	—	—	2	1.5
795-0016-66	M6	—	—	3	1.5
795-0016-85	8-32	—	—	2	1.5
795-0016-11	1/4-20	—	—	3	1.5

C and D denote hex key sizes.



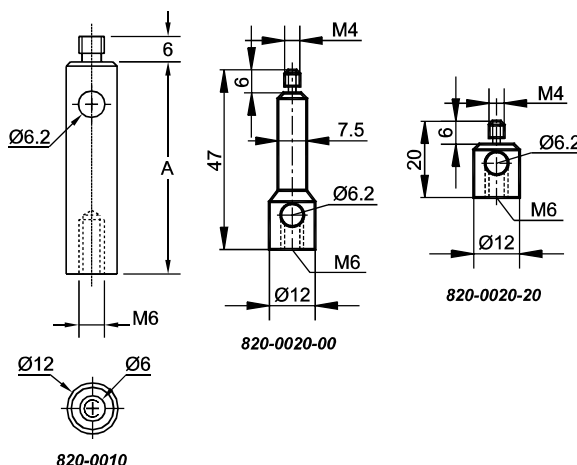
## 820-0010 • 820-0020

## STANDARD RODS



820-0010 stainless steel rods of 12 mm diameter have M6 male threads on the top and M6 tapped holes on the bottom. It allows to mount all accessories directly on

the rod, or to fix the rod directly on movable bases, translators, or to connect the rods. Cross hole at the top of the rod is very convenient for rigid fastening.



The rod 820-0020-00 is especially designed for Precision Mirror Mount (eg. 840-0060) as well as for other mounts with mounting holes M4.

Rod 820-0020 has M4 male thread for the top and M6 thread hole on the bottom.

### Complementary Products

Code	Page
820-0040	7.17
820-0051	7.18
840-0060	online
820-0225	7.23

Code	Height, mm (A)	Weight, kg	Price, EUR
820-0010-00	25.4	0.02	4.4
820-0010-01	38.1	0.03	4.8
820-0010-02	50	0.04	5.2
820-0010-03	75	0.06	5.6
820-0010-04	100	0.08	6.0
820-0010-06	150	0.13	6.9
820-0010-08	200	0.18	7.9
820-0020-00	41	0.02	10.0
820-0020-20	14	0.01	6.0

**820-0030**
**COLLAR**

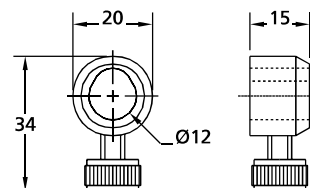

The 820-0030 collar allows to fix model 820-0010 standard rods at desirable height and to rotate the rod without changing height.

Finish: black anodized aluminium.

Code	Weight, kg	Price, EUR
820-0030	0.01	6.4

**Complementary Products**

Code	Page
820-0010	7.16


**820-0040**
**ROD TRANSLATORS**


820-0040-04

820-0040-02

The model 820-0040 Rod Translators provide stable mounting, vertical translation and fixing of model 820-0010 rods in place. One round turn of knurled collet produces 2 mm linear translation of rod with no rotation.

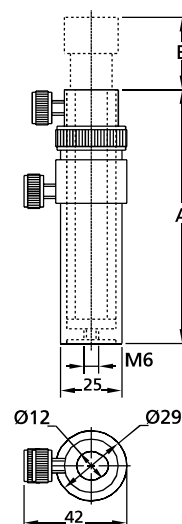
Both the rod and translator bore are double-bored to form two line contacts in the inner wall for rigid lock down. Coarse and precision adjustments are fixed by thumbscrews.

Finish: black oxidized steel.

Code	Height A, mm	Translation range B, mm	Weight, kg	Price, EUR
820-0040-02	67	16	0.22	41
820-0040-04	105	50	0.30	46

**Complementary Products**

Code	Page
820-0010	7.16


**820-0050**
**ROD HOLDERS**

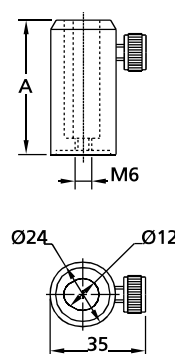

The model 820-0050 rod holders provide convenient and reliable model 820-0010 rod mounting and positioning at fixed height. To eliminate rod wobble, the inside diameter of rod holders is double-bored, providing two full-length contacts in the holder wall to support the rod along its entire length. Model 820-0050 holders can be mounted directly to a table by model 820-0260 screw as well as on bases, fixing by M6 bolts.

Finish: black anodized aluminium.

Code	Height A, mm	Weight, kg	Price, EUR
820-0050-00	25.4	0.02	10.0
820-0050-01	38.1	0.04	10.9
820-0050-02	50	0.05	11.8
820-0050-03	75	0.06	12.5
820-0050-04	80	0.07	12.7
820-0050-06	100	0.08	13.2
820-0050-08	150	0.11	17.3

**Complementary Products**

Code	Page
820-0010	7.16
820-0260	7.24



## 820-0051

## ROD HOLDER WITH BASE ADAPTER



### Complementary Products

Code	Page
820-0010	7.16
820-0125	7.20

Rod holder with base adapter 820-0051 provides convenient mounting of the rod 820-0010 to an optical table using table clamp 820-0125. This combination ensures the the positioning and alignment of various optical mounts using our Standard Rods 820-0010.

Code	Height A, mm	Weight, kg	Price, EUR
820-0051-00	38.1	0.06	16.0
820-0051-01	50.8	0.08	16.9
820-0051-02	62.7	0.09	17.8
820-0051-03	87.7	0.10	18.5
820-0051-04	92.7	0.11	18.7
820-0051-06	112.7	0.13	19.2
820-0051-08	162.7	0.16	23.3

Table clamp  
820-0125

## 820-0055

## FIXED PEDESTALS

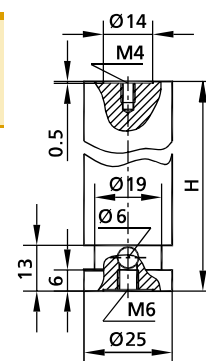


- Solid (Ø25 mm) stainless steel rod
- Random positioning
- Exceptional stability

Code	Height H, mm	Weight, kg	Price, EUR
820-0055-05	25	0.08	16
820-0055-10	50	0.17	18
820-0055-15	75	0.26	20
820-0055-20	100	0.36	22
820-0055-30	150	0.55	24
820-0055-40	200	0.72	28

### Complementary Products

Code	Page
795-0016	7.16
820-0125	7.20



## 820-0060

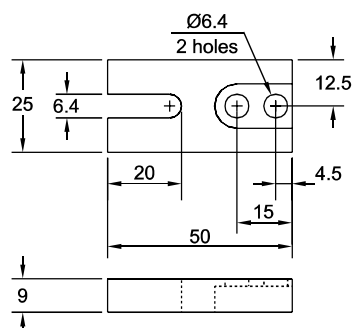
## MOVABLE BASE



The 820-0060 movable base is especially convenient for close space situations. Its primary use is to position rods and small riser blocks.

Finish: anodized aluminium.

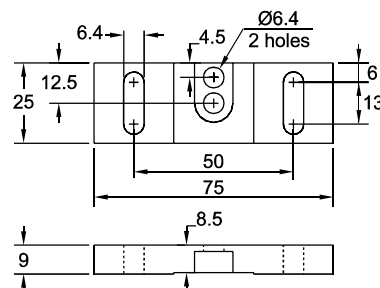
Code	Weight, kg	Price, EUR
820-0060	0.03	7.3



**820-0070**
**MOVABLE BASE**

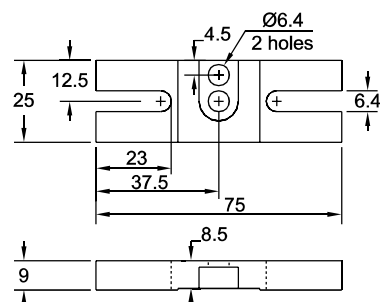

The 820-0070 movable base has 13 mm translation range. It is useful for small rod holders and riser blocks mounting. Finish: anodized aluminium.

Code	Weight, kg	Price, EUR
820-0070	0.04	8.6


**820-0080**
**MOVABLE BASE**

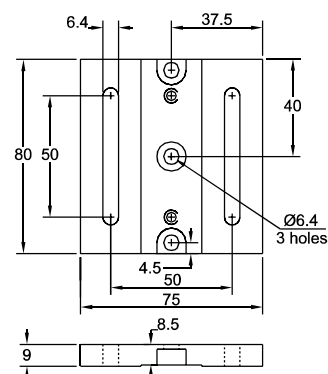

The 820-0080 movable base provides translation of mounted rod holders, translators over 13 mm range with rigid lockdown. Finish: anodized aluminium.

Code	Weight, kg	Price, EUR
820-0080	0.04	7.7


**820-0090**
**MOVABLE BASE**

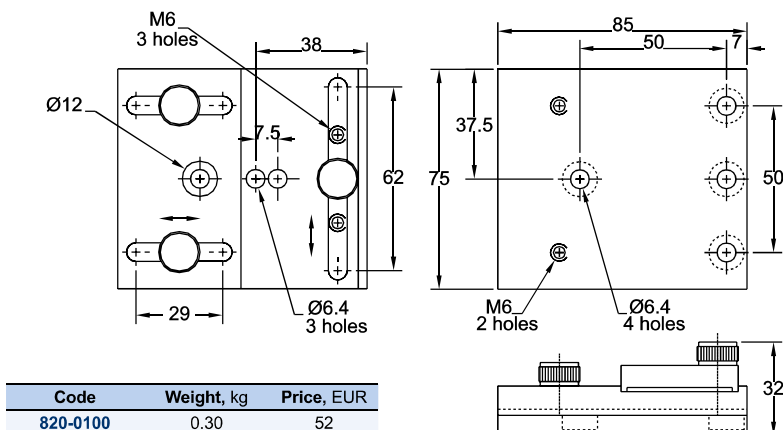

The 820-0090 movable base provides 50 mm longitudinal translation of one or two mounted rod holders, translators or riser blocks. Finish: black anodized aluminium.

Code	Weight, kg	Price, EUR
820-0090	0.12	12.7


**820-0100**
**MOVABLE BASE**


The 820-0100 adjustable base provides separate X-Y adjustment. It is cost-effective solution of non-critical two axes positioning of rod holders, translators and riser blocks.

Finish: black anodized aluminium.



Code	Weight, kg	Price, EUR
820-0100	0.30	52

## 820-0110

## TABLE BASES



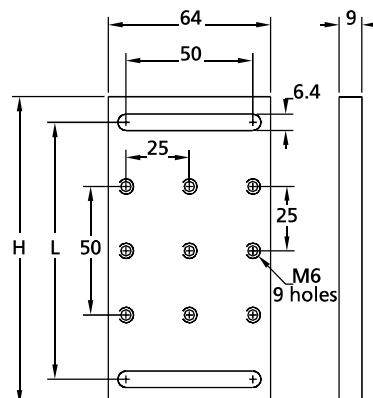
820-0110-02



820-0110-04

The 820-0110-02 and 820-0110-04 standard table bases with 9 and 12 threaded M6 holes respectively allow positioning of all basemounted accessories with M6 tapped holes or male threads anywhere on a table fixing by M6 screws or 820-0230-02 and 820-0230-04 table clamps. Two slots, with 100 or 125 mm distance allow longitudinal positioning along a line of holes in the table.

Finish: black oxidized steel.



820-0110-02

Code	H, mm	L, mm	Weight, kg	Price, EUR
820-0110-02	120	100	0.48	13.0
820-0110-04	145	125	0.57	16.4

### Complementary Products

Code	Page
820-0230-02	7.23
820-0230-04	7.23

## 820-0120

## BASE PLATES WITH ECCENTRIC CLAMP



820-0120-02

820-0120-06

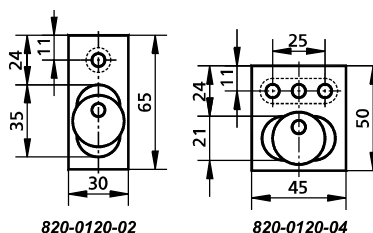
820-0120-04



Bases 820-0120 are used to clamp posts and post holders in random positions.

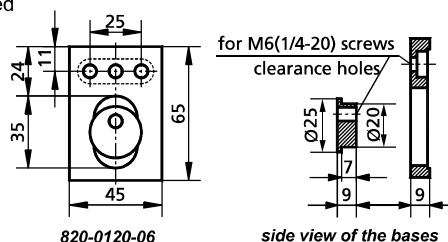
Attach a post to the base using a M6 screw. Set the position. The base rotates around the clamp through 360° and translates within 10 mm. Fix the clamp with a M6 screw.

The base is made of black anodized aluminium.



820-0120-02

820-0120-04



820-0120-06

side view of the bases

Code	Weight, kg	Price, EUR
820-0120-02	0.11	11
820-0120-04	0.12	12
820-0120-06	0.15	15

## 820-0125

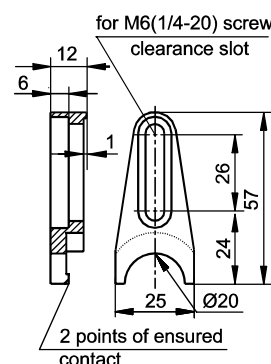
## TABLE CLAMP



820-0125 Table Clamp is used for convenient and fast mounting of 795-0010 rods, 820-0055 pedestals or 820-0051 Rod Holders with Base Adapter on optical tables or breadboards.

Material: stainless steel.

Code	Weight, kg	Price, EUR
820-0125	0.05	15



### Complementary Products

Code	Page
795-0010	online
795-0016	7.16
820-0051	7.18
820-0055	7.18





**820-0130**
**BASE PLATE WITH ROTARY CLAMP**

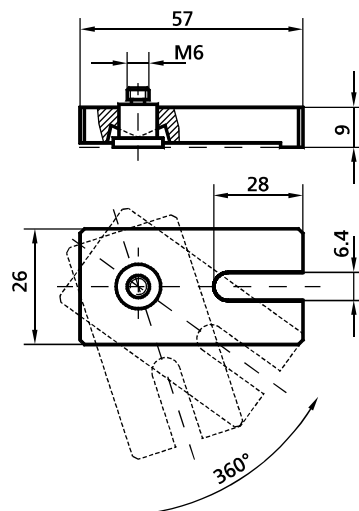

Rotary Clamp 820-0130 is used to fasten components at random positions where they can not be fastened directly to the optical table.

Screw a post or post holder onto the clamp's knob. Then locate the component at the required position. While the knob is firmly attached to the component, it al-

lows the plate to rotate freely. Position the plate's slot over a tapped hole and screw it down to clutch the knob. The component will remain stable.

Material: steel with chemical black finish.

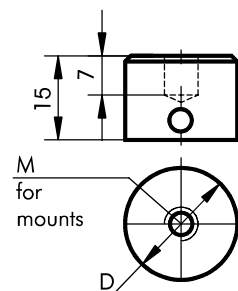
Code	Weight, kg	Price, EUR
820-0130	0.08	8


**820-0150**
**COMPACT MAGNETIC BASES**


820-0150-08

820-0150-02

Small components may be quickly positioned on ferromagnetic optical tables and breadboards or translation stages using Compact Magnetic Bases 820-0150.



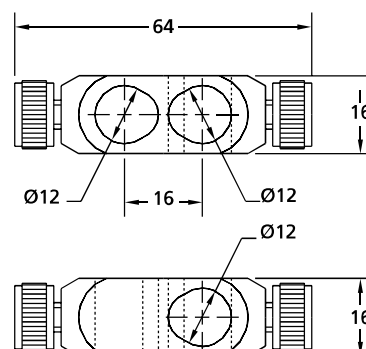
Code	D, mm	M	Holds load up to, kg	Weight, kg	Price, EUR
820-0150-02	19	M6	5	0.03	10
820-0150-04	19	M4	5	0.03	10
820-0150-06	27	M6	10	0.06	16
820-0150-08	27	M4	10	0.06	16

**820-0180**
**ROD CLAMP**


The 820-0180 clamp mounts two standard rods at right angle with respect to each other.

Finish: black anodized aluminium.

Code	Weight, kg	Price, EUR
820-0180	0.02	18



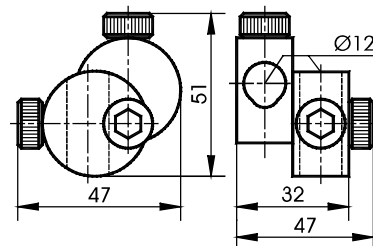
## 820-0190

## ROD CLAMP



The 820-0190 clamp mounts two standard rods at desirable angle with respect to each other. The construction of clamp allows positioning of one rod without loosening of other.

Finish: black anodized aluminium.



Code	Weight, kg	Price, EUR
820-0190	0.11	25

## 820-0200

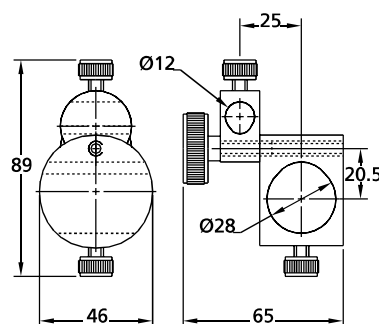
## ROD CLAMP



The 820-0200 clamp holds standard and large rods at desirable angle with respect to each other.

Finish: black anodized aluminium.

Code	Weight, kg	Price, EUR
820-0200	0.12	26



## 820-0210 • 820-0220

## SOLID BASE HEIGHT EXTENDERS

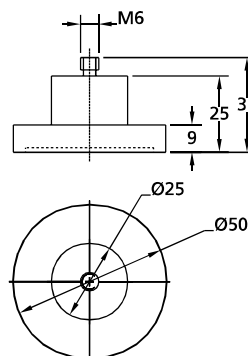


820-0210

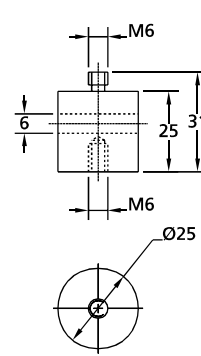


820-0220

The 820-0210 solid base provides mounting of components at fixed optical axis height. It adds 25 mm height for every component to be mounted on. The 820-0220 height extender adds another 25 mm. After positioning solid base can be reliably fixed to a table with 820-0230-02 or 820-0230-04 clamps. Finish: black anodized aluminium.



820-0210



820-0220

Code	Weight, kg	Price, EUR
820-0210	0.06	10.5
820-0220	0.03	7.3

### Complementary Products

Code	Page
820-0230	7.23



**820-0225**
**ROD HOLDERS BASE ADAPTER**

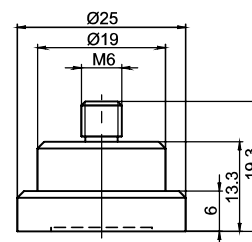

- Designed to be used with Rod Holders 820-0050

820-0225 Rod Holders Base Adapter can be fixed to 820-0050 Rod Holders transforming them to pedestal-style mount 820-0051 Rod Holders with Base Adapter or fixed to 820-0010 Standard Rod enabling them to be compatible with the 820-0125 Table Clamp.

Material: Stainless Steel.

**Complementary Products**

Code	Page
820-0010	7.16
820-0050	7.17
820-0125	7.20



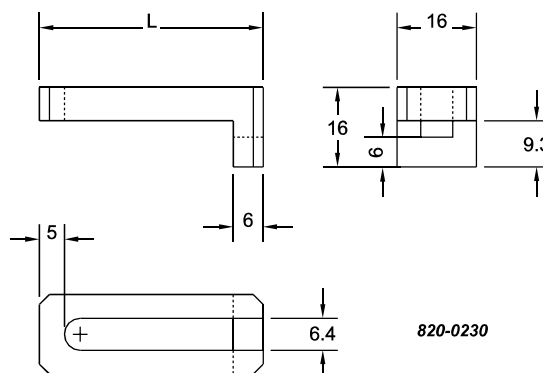
Code	Weight, kg	Price, EUR
820-0225	0.04	6

**820-0230**
**TABLE CLAMPS**


820-0230-02



820-0230-04



The 820-0230-02 and 820-0230-04 clamps provide fixing of movable bases and other components to a surface with M6 tapped holes. It is useful when direct mounting of components is not practical. Finish: black oxidized steel.

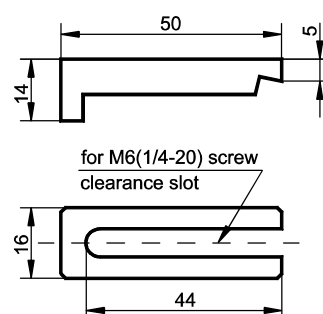
Code	L, mm	Weight, kg	Price, EUR
820-0230-02	45	0.026	6
820-0230-04	60	0.03	8

**820-0240**
**TABLE CLAMP**


Using Table Clamps 820-0240 you can position most base mounted components at any angle on the table and not to be limited by mounting hole pattern of the optical table. For using clamps the device is positioned so that the slot of the clamp is over the base and a screw can be inserted into a tapped hole. Tightening this screw can generate sufficient force for most mounting applications.

Material: steel with chemical black finish.

Code	Weight, kg	Price, EUR
820-0240	0.03	10

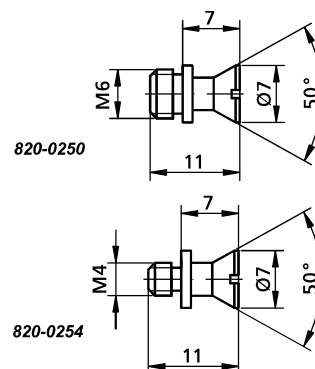


## 820-0250 • 820-0254 CONNECTING CONES



Connecting Cones are particularly useful for connecting elements when specific orientation plane is required, e.g. Narrow Translation Stages 860-0060-02 (860-0060-04) joined for X-Y-Z motion. Connecting cone is made of black finished steel and has M6 (M4) thread at one end and 50° cone in another. A component is fastened to the cone using an additional fastening screw.

Code	Thread	Weight, kg	Price, EUR
820-0250	M6	0.01	4.5
820-0254	M4	0.01	4.5



## 820-0270 HEX KEY

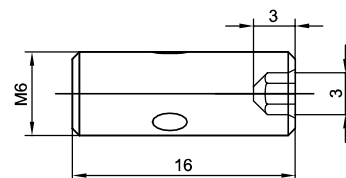
## 820-0260 • 820-0280 SCREWS



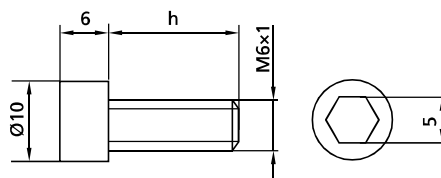
820-0270 820-0260

The "L" shaped 820-0270 hex key is very convenient in all mounting situations. The 820-0260 screw is very useful for mounting of rods, rod holders, large rod 810-0040 directly to the table top or where M6-M6 connection is required. M6-M4 adapters are also available.

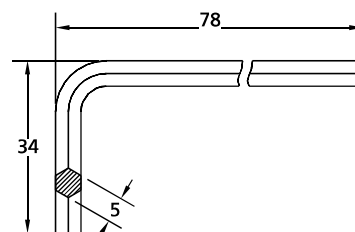
Code	Weight, kg	Price, EUR
820-0260	0.005	0.73
820-0270	0.020	0.73



820-0260



820-0280



820-0270



These hex socket head cap screws are available in different lengths.

Code	Length h, mm	Package	Price, EUR
820-0280-01	10	10 pcs	0.8
820-0280-02	16	10 pcs	0.9
820-0280-03	20	10 pcs	1
820-0280-04	25	10 pcs	1.1
820-0280-05	30	10 pcs	1.2
820-0280-06	45	10 pcs	1.3
820-0280-07	50	10 pcs	1.4

## 820-0290 WASHER



A Washer is made of black finished steel and is used for protecting of surfaces from scratches and provides more stable tightening.

Code	Package	Price, EUR
820-0290	10 pcs	0.3

