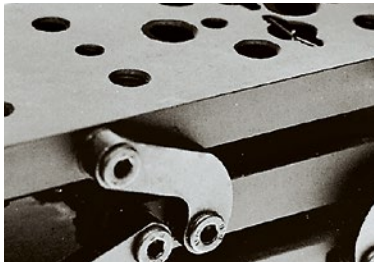




Dear Customers,

product prices provided in this brochure are outdated. Due to supply shortages and material price increases, some product prices have changed. We will update this brochure soon. Please contact us for a quotation with updated prices. Thank you for your understanding.



Base Positioners

850-0010

MULTI-AXIS TILT PLATFORM



Multi-Axis Tilt Platform 850-0010 provides angular adjustment about two axes – tilting and in-plane rotation.

The mounting platform is rotated around kinematic pivot point by two micrometers. The out-of-plane tilting range is $\pm 2^\circ$ and the in-plane rotation range is $\pm 2.5^\circ$. Two micrometer screws are located side by side for a handy use. The adjustment movements are not calibrated, and they are uncoupled.

The platform has a 25 mm grid of M6 and M4 tapped holes.

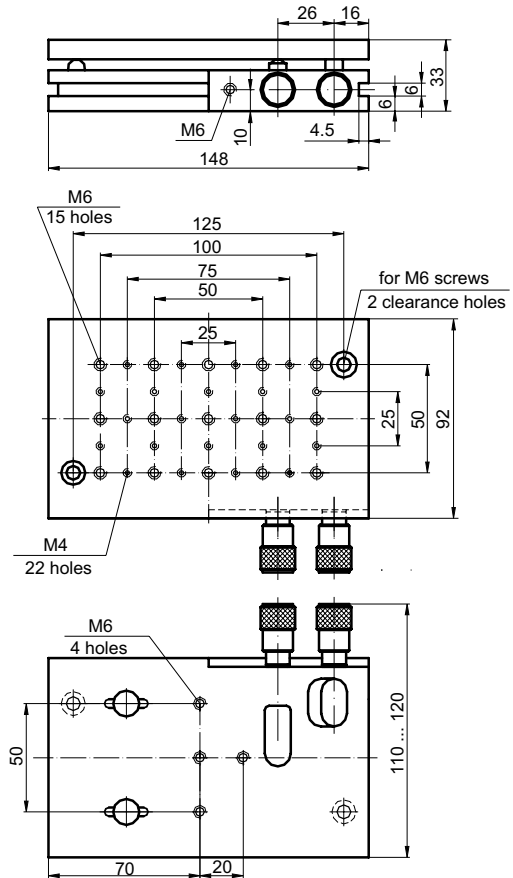
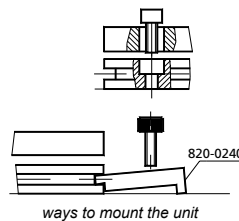
Two clearance holes $\varnothing 6.2$ mm are provided in the base of the unit. This allows to attach 850-0010 to tables and breadboards. Also you can clamp the base of the unit by Table Clamp 820-0240; this way you can place the unit on the table in any direction.

The tilt platform is made of black anodized aluminium.

SPECIFICATIONS

Tilt Θ_y	$\pm 2^\circ$
Rotation Θ_z	$\pm 2.5^\circ$
Load capacity	15 kg
Weight	1 kg

Code	Price, EUR
850-0010	188

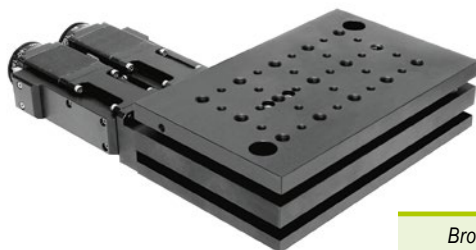


bottom view

Complementary Products

Code	Page
820-0240	8.41

Motorized version is available – 970-0090



Brochure of 970-0090 is available on request at TOPAG.

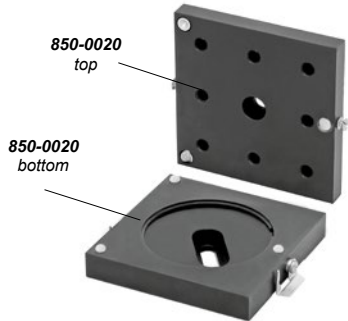
SPECIFICATIONS

Tilt y	$\pm 2^\circ$
Rotation z	$\pm 2.5^\circ$
Resolution: in full step	1.25 μm
in 1/8 step	0.156 μm
Lead screw pitch	0.25 mm
Repeatability	1 μm
Maximum load capacity	15 kg
Type of actuator	970-0065
Cable	1.2 m length cable included
Motor connector	DB15(M)
Weight	1.3 kg

850-0020 • 850-0022 KINEMATIC BASES



850-0020



850-0020 top

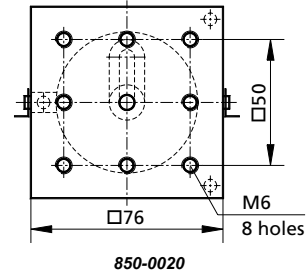
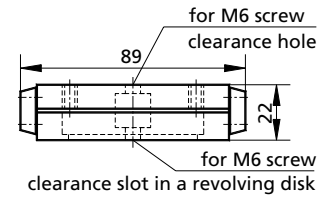
850-0020 bottom

- Kinematic repositioning with repeatability of several arcsec
- Exclusive mounting disk for extra freedom in positioning (850-0020 only)
- Hooks made of spring steel enable reliable locking and quick-release

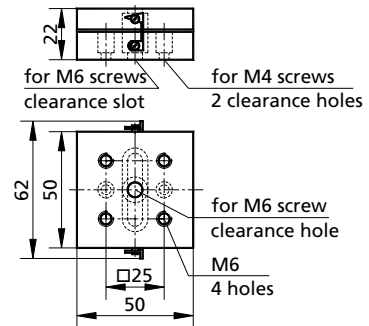
Platform can be unhooked from the bottom plate together with all the units still mounted on it. It can later be replaced just as it was, with a repeatability of several arcsec. The bases use a kinematic scheme, where three steel balls register with a cone, a v-groove, and a flat. The balls and registers are made of hardened polished steel. Hooks prevent the platform from accidental movements. The bottom plate is fastened through clearance holes or a slot. 850-0020 has a revolving mounting disk adding a degree of freedom of positioning. Material: aluminium. Finish: black anodized.

These Kinematic Bases are used for repeated positioning of groups of units mounted on their platforms, using M6 mounting holes. Alternatively, M6 screw can be fit through a clearance hole from beneath.

Code	Platform dimensions, mm	M6 holes on top	Weight, kg	Price, EUR
850-0020	76×76	8	0.30	75
850-0022	50×50	5	0.14	70

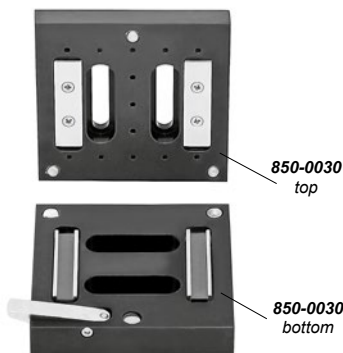


850-0020



850-0022

850-0030 MAGNETIC KINEMATIC BASE

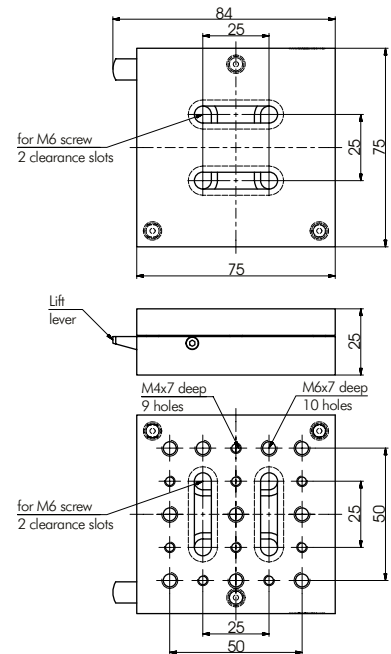


850-0030 top

850-0030 bottom

You can lift the units mounted on the platform as a group. The platform is replaced with a repeatability of 50 µm. The platform has patterns of M4 and M6 mounting holes. Alternatively, M6 screws can be fit through the clearance slots from beneath. Two high strength magnets lock the platform to the bottom plate. The bottom plate is fastened by M6 screws through a pair of transversal clearance slots. Push the special lever to lift the platform with minimal jolts. Material: aluminium. Finish: black anodized.

Code	Surface, mm	Weight, kg	Price, EUR
850-0030	75×75	0.36	75



OPTICAL TABLES

BRACKETS & RAILS

BASE MOUNTS & ACCESSORIES

OPTICAL MOUNTS

OPTICAL POSITIONERS

BASE POSITIONERS

TRANSLATION & ROTATION STAGES

ADJUSTMENT SCREWS

MOTORIZED POSITIONERS

850-0040

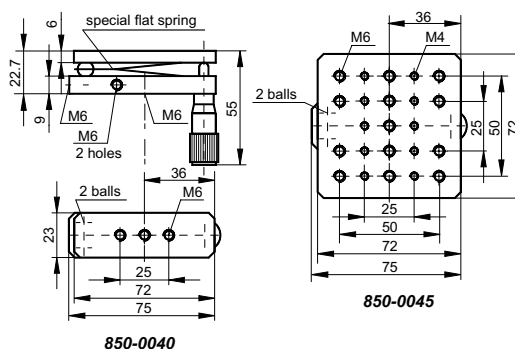
SINGLE AXIS TILT STAGE



A Single-Axis Tilt Stage 850-0040 provides tilt range of 6° with 6 μrad sensitivity. Pivot is done on two hardened steel balls.

The base has M6 tapped holes on four sides, to fasten the platform, for example on mounting posts.

Material: aluminium.
Finish: black anodized.



Ordering Information

Code	Weight, kg	Price, EUR
850-0040	0.11	61
850-0045	0.16	66

Example codes	Fine driving screw	See page
850-0040; 850-0045	870-0030 (comes as standard – omit the screw code)	8.134
850-0040-06; 850-0045-06	870-0060 (alternative screw – append 06 to the code)	8.138
850-0040-08; 850-0045-08	870-0050	8.136

850-0095

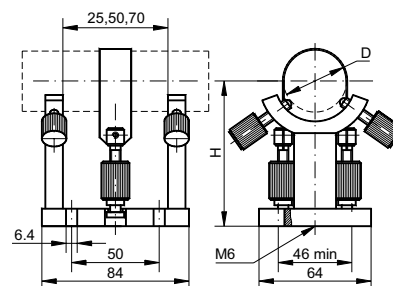
ADJUSTABLE LASER / LASER HEAD HOLDER



Adjustable Laser/Laser Head Holder 850-0095 is used for repeatable mounting and drift-free pointing of laser heads and other cylindrical objects.

You may easily reposition the two supports to select an optimal basis for cylindrical objects of differing lengths (basis of 25, 50, or 70 mm).

850-0095 is made of black anodized aluminium and is equipped with 6.4 mm clearance slots and M6 tapped holes to attach to tables and breadboards.



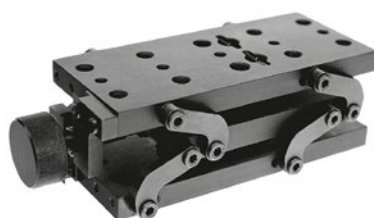
- Stable design
- Precise adjustment about linear and angular coordinates
- Wide adjustment angle
- High load capacity
- Convenient mounting

Code	D, mm	H, mm	Weight, kg	Price, EUR
850-0085	Ø48–Ø55	≈65	0.20	106
850-0095	Ø25–Ø36	≈75	0.26	98



850-0200

ADJUSTABLE HEIGHT PLATFORM



Motorized Vertical Translation Stage 940-0200



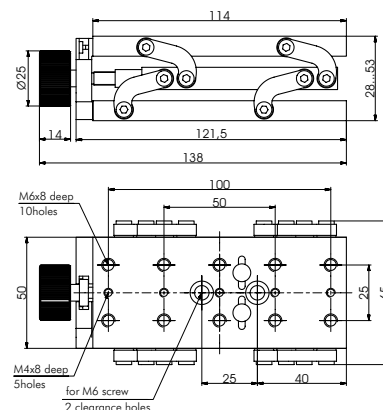
see page 8.149

Adjustable Height Platform 850-0200 is a stable vertical translation stage of original design with 25 mm travel range and maximum load capacity of 3 kg. A polished lead screw has 0.5 mm pitch and allows to define the height of platform with 20 μm sensitivity.

Arrays of mounting holes M6 and Ø6.5 mm with 25 mm spacing are identical on the upper and lower plates.

Adjustable Height Platform is ideal for use with 860-0060-06 Translation Stage, when it is necessary to define one or two horizontal coordinates at a certain height.

The platform is produced from black anodized aluminium, the lead screw block is produced from stainless steel and bronze.



SPECIFICATIONS

Load capacity, kg	3
Travel range, mm	25
Sensitivity, μm	20
Weight, kg	0.5

Complementary Products

Code	Page
860-0060-06	8.111

Code	Price, EUR
850-0200	221