

PM1

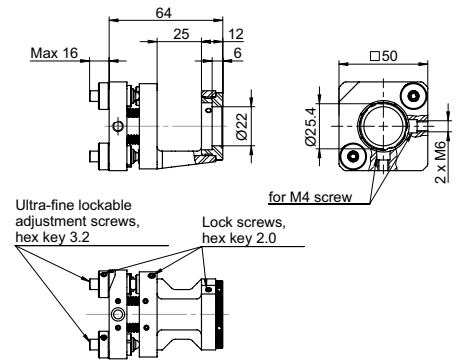
MOUNTING STAGE FOR POCKELS CELLS OF Ø25.4 mm



PM1 series mounting stage is designed for holding and positioning of Ø25.4 mm Pockels cells. The mount has ultra-fine thread lockable adjustment screws.

SPECIFICATIONS

MODEL	PM1
Adjusting angles, tilt and tip	±3.5°
Rotation along Z-axis	180°
Adjustment screw thread	M6×0.25
Screw sensitivity	0.5 µm



HPR

MOUNTING STAGE FOR POCKELS CELLS OF Ø35 mm

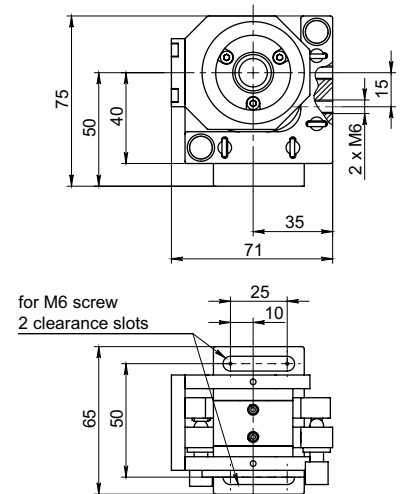


Other side

HPR series mounting stage is designed for holding and positioning of Ø35 mm Pockels cells. HPR stages with fine or ultra-fine screws are available upon request.

SPECIFICATIONS

MODEL	HPR-35
Suitable for pockels cells housing diameters, mm	Ø35
Adjusting angle along X and Y axis, deg	9
Rotating angle along Z-axis, deg	20
Beam high above breadboard, mm	50
Adjustment screw thread	M6×0.5
Screw sensitivity	1.5 µm



POCKELS CELLS

DRIVERS FOR POCKELS CELLS

HV POWER SUPPLIES FOR PC DRIVERS

LASER DIODE DRIVERS

SYNCHRONIZATION MODULES FOR LASERS

PULSE PICKING SYSTEMS

OVENS FOR NONLINEAR CRYSTALS