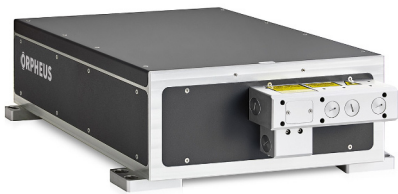


ORPHEUS-NEO

NEXT-GENERATION OPTICAL PARAMETRIC AMPLIFIER



The new tunable femtosecond laser Orpheus-NEO is a technical advancement of Orpheus-HP and Orpheus-ONE models. Orpheus-NEO provides short pulses from 100 to 300 fs in a tuning range from 320 nm to 16 μm at a repetition rate of up to 2 MHz. This OPA is pumped with up to 80 W, 800 μJ @1030 nm.

Compared to previous Orpheus models, Orpheus-NEO is hermetically sealed which ensures extremely high long-term power stability and pulse-to-pulse energy stability of <1%. In addition, the system comes with integrated diagnostics for complete internal monitoring and beam tracking. This enables fast and easy remote maintenance.

Orpheus-NEO was developed to meet most demanding user requirements regarding stability, flexibility and user-friendliness. The system is dedicated for multiphoton microscopy, ultrafast spectroscopy and many more scientific applications.

NT262

HIGH PULSE REPETITION RATE TUNABLE NANOSECOND LASER



NT262 is a new unique narrow linewidth 10 kHz OPO from laser manufacturer Ekspla. The laser system provides a tuning range from 210 nm to 2.6 μm with max. output power of 700 mW at 450 nm. The system stands out by its narrow linewidth <3 cm^{-1} . Pump laser and OPO are integrated into a single compact housing. The system is highly stable, ensures excellent energy and power stability, high reliability and low maintenance costs.

Besides applications like fluorescence and pump-probe spectroscopy, the system is also suitable for demanding applications requiring narrow linewidth excitation or fast, tunable pulse trains like Raman spectroscopy, ion beam spectroscopy or photoacoustic imaging.

GOGGLES

SAFETY EYEWEAR FOR PULSED LASER SYSTEMS



TOPAG now offers laser safety eyewear for all its pulsed laser systems in cooperation with manufacturer Protect Laserschutz GmbH. The goggles are made of special polymers that ensure protection against one or several wavelengths while transmitting enough visible light. The laser safety filter is CE certified in accordance with the requirements of EN 207. Goggle frames suitable for spectacle wearers are also available.